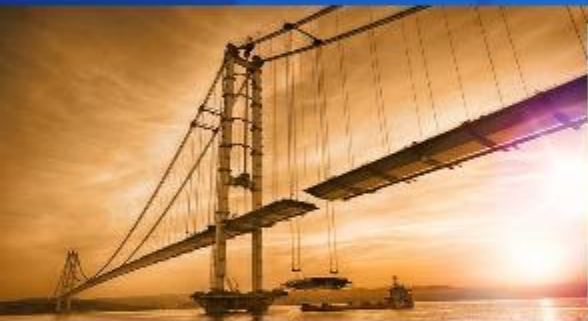


cimtas

INTEGRATED SOLUTIONS



GROUP PRESENTATION

CORPORATE ALIGNMENT LOGO



ZERO ACCIDENT

CORPORATE **MVV**

our mission

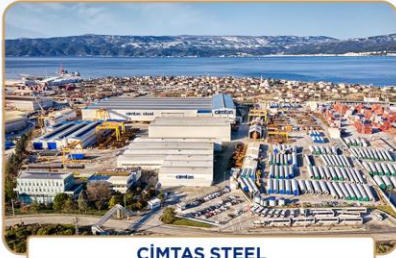
To **deliver** high **quality** engineering, procurement, welded fabrication, assembly and installation services, **safely, on time** and at the **least total cost** of each customer.

our vision

To be the **best-in class** and **preferred** partner for the engineered and **integrated** solutions of the demanding construction projects.

our values

Safety, competency, development and leadership of our **employees**
Satisfaction of our **customers** through operational excellence and flexibility
Effective use of advanced **technology** and **information**
Identification and roll-out of **best practices** and **lessons learned**
Being **innovative** in everything we do and willingness to **change**
Being ethically, environmentally and socially **responsible**



ÇİMTAŞ STEEL



ÇİMTAŞ İSTANBUL HEADQUARTERS



ÇİMTAŞ PIPE FABRICATION AND TRADING LTD. CO.



ÇİMTAŞ PRECISION MACHINING



ÇİMTAŞ PIPE SPOOL WORKS



ÇİMTAŞ MODULE AND SHIPYARD



ÇİMTAŞ PIPE FITTING WORKS



ÇİMTAŞ NINGBO MODULAR SKIDS & PIPE SPOOLS



ÇİMTAŞ PIPE LSAW PIPE WORKS



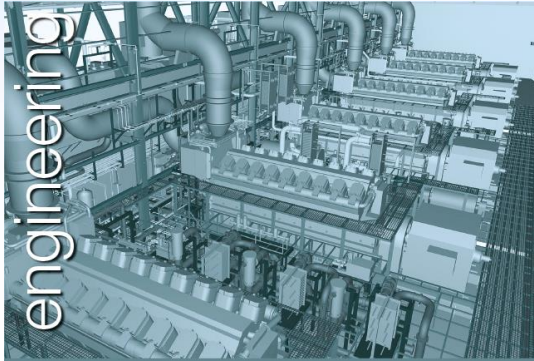
- A subsidiary of ENKA
- Incorporated in 1973 in Turkey as a local steel fabricator now an EPFI group of 5 companies:
 - Gemlik, Turkey:**
 - Cintas Steel,
 - Cintas Pipe Fabrication and Trading Ltd. Co.,
 - Cintas Precision Machining Industries and Trading Ltd. Co.
 - Kocaeli, Turkey:**
 - Cintas Module and Shipyard,
 - Ningbo, China:**
 - Cintas Ningbo Modular Skids Pipe Spools
- 3,500 people including 300 engineers
- With Activities in
 - Engineering (structural, pressure vessels, piping, plant engineering)
 - Manufacturing and Fabrication (6 in Turkey & 1 in China, over 340,000 tons/year total capacity)
 - Modularization (Pre-assembled racks, Pre-assembled units)
 - Installation - Structural & Mechanical & Electrical (domestic and overseas jobsites)
 - Shipbuilding (power ships, barges, tankers / gas carriers)

www.cintas.com
www.cintaspipes.com
www.cintasmachining.com

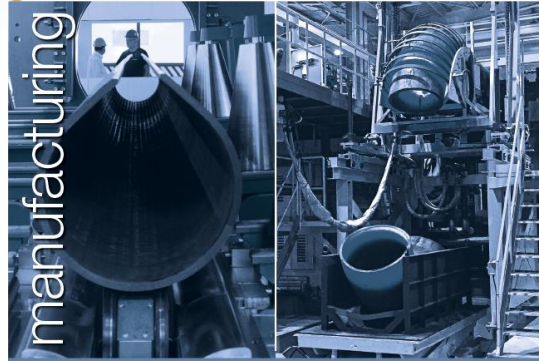
www.cintasshipyard.com

www.cintasnbo.com

ACTIVITIES



- engineering**
- Pressure Vessels
 - Plant Engineering
 - Power, OG&C (Downstream)
 - Process Design
 - Power, Process & OEM Piping
 - Piping Components Design
 - Heat Exchangers
 - Storage Tanks
 - Civil & Structural Design
 - Gas Processing Equipment & BOP Equipment Design
 - Electrical & Instrumentation
 - Technical Procurement
 - Reverse Engineering
 - Marine Engineering



- manufacturing**
- Forming
 - Hot Forming
 - Elbows & Tees
 - Hot Forming 2 Halves
 - Elbows
 - Cold Forming
 - Elbows
 - Cold Rolling
 - Reducers
 - LSAW Pipes
 - Bending
 - Induction Bending
 - Automated Cold Bending
 - Mechanical Testing & Metallography Laboratory



- fabrication**
- Pressure Vessels
 - Power, Process & OEM Piping
 - Heat Exchangers & Steam Drums
 - Reactors
 - Spherical, Cylindrical, Gas & Liquid Storage Tanks
 - Steel Wind Towers
 - Structural Steel
 - Power Plants
 - Industrial Plants
 - High Rise Buildings
 - Bridges
 - Airports



- machining**
- Multi - Axis CNC Machining
 - Machining Tolerances: $\pm 0.005\text{mm}$
 - CMM Inspection
 - Tooling & Fixture Design (Product Specific)
 - Formed, Cast & Forged Products
 - Combustion Components
 - Special Forged Fittings
 - Flanges

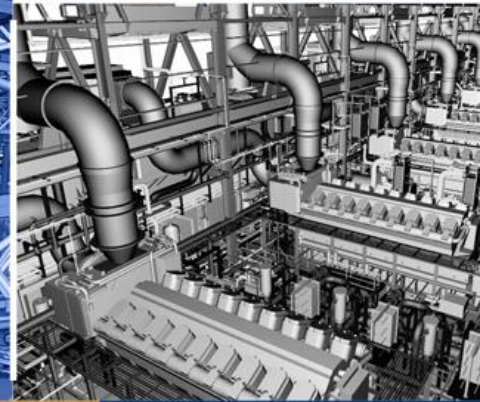
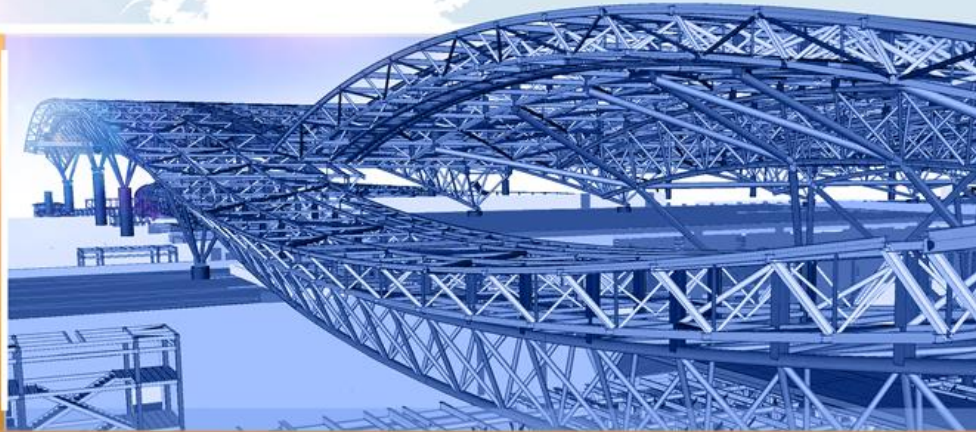
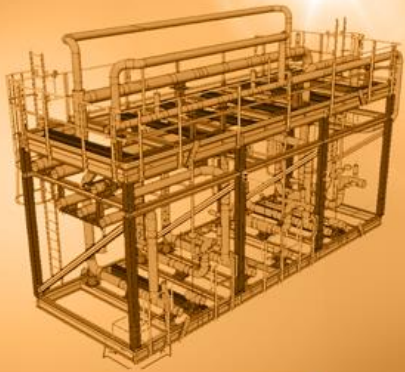


- modularization**
- Modules
 - Pre-assembled Process Units (PAUs)
 - Pre-assembled Racks (PARs)
 - Shipbuilding
 - Skids
 - Process Skids
 - Turbine Machinery Skids
 - Flow Divider & Measuring Units
 - Offshore Platforms



- installation**
- Refineries
 - Petrochemical Plants
 - High Rise Buildings
 - Power Plants
 - Industrial Plants
 - Fertilizer Plants
 - Pump & Compressor Stations
 - Steel Bridges
 - Storage Tank Farms
 - Piping including Critical & Heavy Wall

ENGINEERING



ENGINEERING

Cimtas Plant Design and Engineering Group (Bursa, Turkey) provides various engineering and design services including conceptual, basic and detail engineering for the industries including but not limited to power, oil and gas, chemical, offshore and refinery.

SCOPE

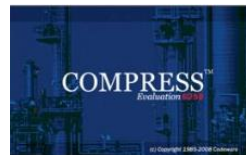
- Process & Control
- Plant Design & Piping
- Pipe stress analysis & Pipe Supporting
- Mechanical Design & FEA analysis
- Structural Design
- Electrical & Instrument Design
- Technical Procurement
- Valves, Instruments, Pipe Supports, Process Equipment Packages
- Reverse Engineering-Laser Scanning

ENGINEERING SOFTWARE ASSETS

3D Modelling



Calculation



Drafting



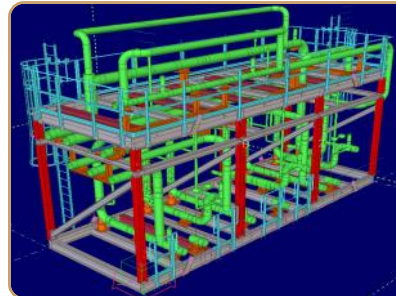
Process and Flow



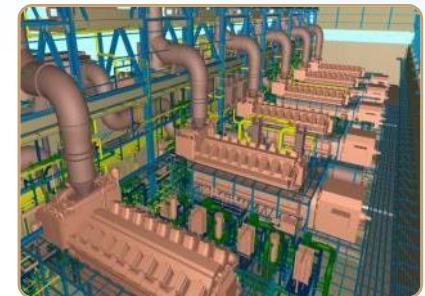
ENGINEERING EXPERIENCE



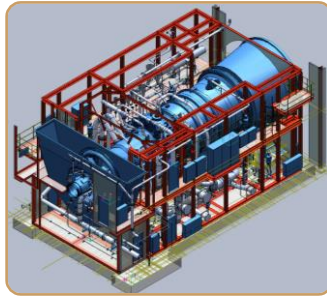
3x42 MW SCGT Power Plant, West Qurna-2 Oilfield, Iraq, ENKA



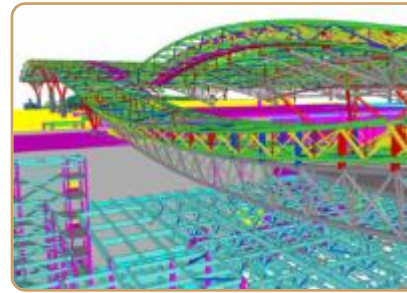
Compressor Manifold Skid, SGP, Kazakhstan, TCO



111 MW KPS 6, Powership, Turkey, KARADENIZ ENERGY



M501 GAC Modularization Project Scope: Detail Design, U.S.A., MHPS



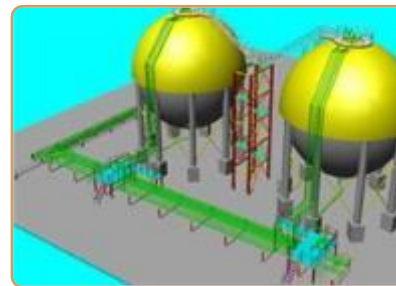
Muscat Int.'l Airport Roof Structure, Oman, ENKA



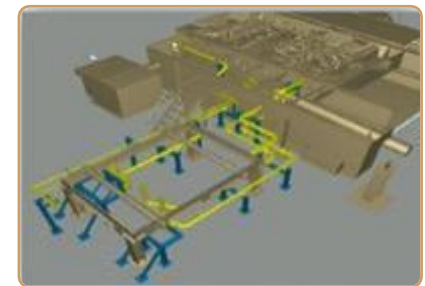
Pressure Vessels D107-D203, Turkey, PETKIM



GE EVM II BOP Modules & L41 & 42 Piping, Mexico, GE Power

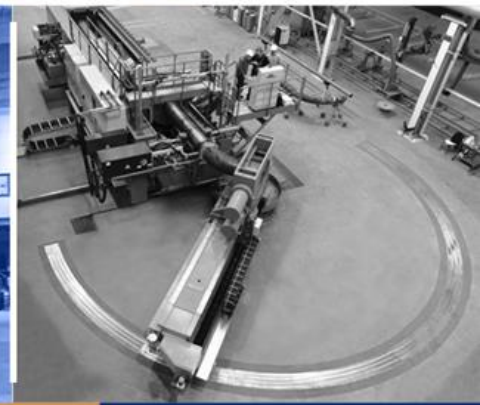


Propylene Storage Tanks, Turkey, PETKIM



Interconnecting Piping, DLN 1 Upgrade, China, GE

MANUFACTURING



BUSINESS LINES

- **LSAW Pipes**
 - Line Pipes, Process Pipes, Structural Pipes
- **Fittings**
 - Elbows, Tees, Reducers, Flanges, Cimtas® Branch Components
- **Bending**
 - Induction and Automated Cold Bending
- **GT Combustion Components**
- **Aviation Gas Turbine Rotating and Structural Parts & Modules**
- **Aircraft Structural Parts**

Special Processes

- 2 EB Weld (30KW – 403ft³)
- 3 Vacuum Heat Treatment & Brazing (177 ft³)
- 2 HVOF & Plasma Arc Spray
- 1 Robotic Laser Cutting and Laser/TIG Welding System
- 1 Shot peen & 1 Automated Grit Blasting
- 1 CMT Robotic Additive Welding



Inspection & Testing

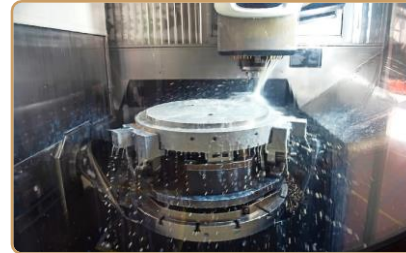
- X-Ray 1 unit -200Kv
- Fluorescent / Liquid Penetrant Inspection
- Air Flow Inspection & Contact Ultrasonic Cleaning
- Video Boroscope Inspection & 2 CMM
- In-house Level I, II, III NDT personnel (SNT-TC-1A & PED 97/23, EN 473, NAS410)
- Accredited Mechanical & Metallography Lab. (ISO/IEC 17025:2005)



Machining: 16 x 5-axis + 4 multi axis CNC

5-Axis Turning & Milling – Vertical/ Horizontal

- 6 Mazak Integrex e-TOWER 1060 V8-II
- 1 Mazak Variaxis i800 & 2 Mazak Integrex i200s
- 2 Mazak Integrex e-Tower 1250 V8-II & 1 Mazak FJV 60/80
- 4 DMU_85 Monoblock & 1 DMU Moriseiki NLX 2500 I 700
- 2 Mazak Variaxis i800 & 1 DMU_125 FD duoBlock

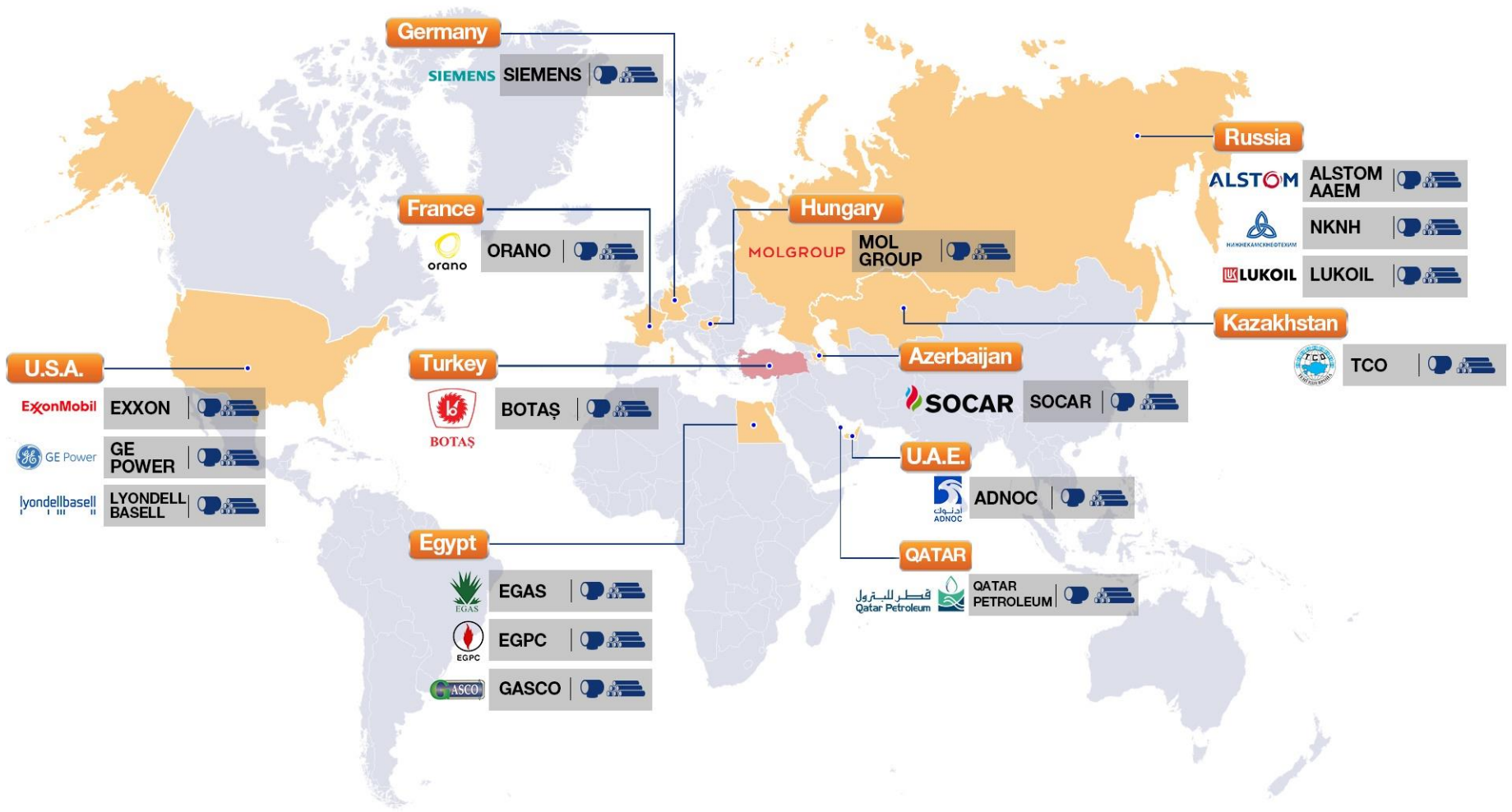


Conventional Welding & Forming

- **Conventional Welding:** Austenitic Stainless Steel (304L to 347) | Duplex Stainless Steel Nickel Alloys (Incoloy, Inconel [AMS5536, AMS5542, AMS5608], Nimonic [C-263] Monel) | Alloys (P11, P92, etc)
- **Forming:** 3 Vertical Hydraulic Presses 197 x 138 x 177 inch – max. 2,500 tons | Hydraulic Expander Ø23,6”-0.40”thk. 150 tons
- 4 Roller Cylinder m/c 1,000 mm w – 1.02 inch thk | Waterjet



APPROVALS for CIMTAS PIPE LSAW PIPES & FITTINGS



 LSAW Pipes
  Buttweld Fittings, Flanges, Induction Bends

This list only includes O-O (Owners - Operators) and OEM (Original Equipment Manufacturers)

Algeria

- **Oumache Combined Cycle Gas-Fired Power Plant** / BW Fittings
GE Power
- **Hydrocarbon Transportation** / Induction Bends
Commerciale Tubi Acciaio S.p.A. (C.T.A)

Azerbaijan

- **Haydar Aliyev Oil Refinery (HAOR)** / Sour Service LSAW Pipes
Maire Tecnimont / Cünado / Buhlmann

Bahrain

- **ALBA Power** / BW Fittings
GE Power

Belgium

- **Kallo Project** / BW Fittings, LSAW Pipes
Commerciale Tubi Acciaio S.p.A. (C.T.A) & Dylan Group

Brazil

- **Floating Production Storage & Offloading (FPSO) Project** / Induction Bends
I.M.G. International

Bulgaria

- **Compressor Station** / LSAW Pipes
Buhlmann

Canada

- **Kitimat LNG** / LSAW Pipes
Erciyas Boru

Croatia

- **Omišalj LNG** / LSAW Pipes
OMV Indoil & TPK Armatura
- **Rijeka Refinery** / LSAW Pipes
Kinetics Technology

Egypt

- **South Helwan Supercritical PP** / BW Fittings
Upper Egypt Electricity Production Company (UEEPC)
- **BP West Nile Delta Project** / BW Fittings, Flanges, Induction Bends
Bechtel International Inc.
- **El-Teena / Meet-Nama 42" Gas Pipeline Project** / BW Fittings.
GASCO

France

- **Provence Grand Large Floating Offshore Project** / LSAW Pipes
Eiffage Metal

Germany

- **Marl Chemical Park CAPP** / BW Fittings, LSAW Pipes
Buhlmann
- **Herne Project** / BW Fittings, Induction Bends
Siemens

Greece

- **Riser Pipe for Offshore Project** / LSAW Pipes
GE Oil&Gas

Holland

- **A24 Blankenburg - Verbindng Highway** / LSAW Pipes
Erciyas Boru
- **Offshore Jacket** / LSAW Pipes
Sociedade de Montagens Metalomecánicas S.A (SMM)

Hungary

- **MOL Polyol Project, U/G Scope** / LSAW Pipes, BW Fittings, Flanges
Thyssenkrupp Industrial Solutions
- **MOL Polyol Project, A/G Scope** / LSAW Pipes, Flanges
Thyssenkrupp Materials Solutions

Indonesia

- **Muara Tawar Power Plant** / BW Fittings
Doosan

Israel

- **Orot Rabin Project** / BW Fittings
Israel Electric

Iraq

- **Besmeya Power Plant 1 & 2/** BW Fittings
ENKA & CMI
- **Dhi Qar 750 MW Combined Cyle Power Plant** / BW Fittings
ENKA & GE

Italy

- **Enertrade** / Induction Bends
- **Commerciale Tubi Acciaio S.p.A. (C.T.A)** / LSAW Pipes
- **Dhi Qar 750 MW Combined Cyle Power Plant** / BW Fittings
ENKA & GE
- **LASA Hydropower Plant** / LSAW Pipes
PAC Spa

Kazakhstan

- **TCO Future Growth / Wellhead Pressure Management Project** / BW Fittings
Çimtaş

Morocco

- **JESA DAP Lines Project** / BW Fittings
MMSA

Poland

- **Zeran Power Plant** / BW Fittings
CMI Group

Portugal

- **Oil Tanking Antwerp Terminal Project** / LSAW Pipes
Sociedade de Montagens Metalomecánicas S.A (SMM)

Romania

- **TRANSGAZ Project** / Induction Bends
Sutech

Russia

- **NIZHNEKAMSK Power Plant** / BW Fittings
ENKA
- **Lukoil** / LSAW Pipes
Commerciale Tubi Acciaio S.p.A. (C.T.A)

South Africa Republic

- **Main Riser for Tubes Offshore Project** / LSAW Pipes
GE Oil&Gas

Turkey

- **Yalova Steam Turbine Project** / BW Fittings, Induction Bends
AKSA
- **Kızıldere-3 Geothermal Power Plant** / BW Fittings, Flanges
TOSHIBA
- **BOTAŞ Marmara Ereğlisi LNG Project** / LSAW Pipes, BW Fittings
Renaissance Heavy Industries (RHI)
- **BOTAŞ FSRU Upgrade - Dörtöyl** / BW Fittings
Mitsui OSK Lines
- **Tüpraş Refinery** / LSAW Pipes
Tekfen
- **STAR Refinery** / LSAW Pipes, BW Fittings, Flanges, Cim-Let®
State Oil Company of the Azerbaijan Republic (SOCAR)
- **BOTAŞ Kuzey Marmara UG Gas Storage Facility Offshore Platform**
LSAW Pipes, BW Fittings, Flanges, Branch Outlets
Çimtaş Module & Shipyard
- **BOTAŞ Kuzey Marmara UG Gas Storage Facility** / LSAW Pipes
Renaissance Heavy Industries (RHI)
- **Pamukören Geothermal Project** / BW Fittings
Çelikler Holding
- **Gemlik Urea Plant Project** / LSAW Pipes
Marie Tecnimont / Van Leeuwen
- **Türkiye Petrolleri Anonim Ortaklığı (TPAO) Casing Kits** / LSAW Pipes
Baker Hughes

Uruguay

- **Taurus Project** / BW Fittings, LSAW Pipes
Buhlmann

U.K.

- **Seagreen Offshore Wind Farm Project** / LSAW Pipes, Induction Bends
Lamprell Energy
- **Flamenville** / BW Fittings
GE Power

U.S.A.

- **SHELL Pennsylvania Chemicals / Franklin Project**
Sour Service LSAW Pipes, BW Fittings, Induction Bends, Lateral Tee
MRC Global
- **Sabine Pass LNG Terminal** / LSAW Pipes, BW Fittings, Cim-Let®
Bechtel OG&C Houston
- **Corpus Christi Liquefaction Project** / LSAW Pipes, BW Fittings, Cim-Let®
Bechtel OG&C Houston
- **Hummel Power Plant** / BW Fittings
Bechtel Power



FABRICATION



BUSINESS LINES

- **Pressure Vessels** (up to 1,300 tons unit weight, t= 200 mm, P= 225 bar, P11 alloy)
- **Full Scope Piping** (Engineering, Procurement, Fabrication, Manufacturing (LSAW Pipe and Fittings), Induction and Cold Bending, Painting, Packing, Framing)
- **Structural Steel** (High Rises, Industrial Buildings, Bridges)
- **Steel Wind Towers, Wind Turbine Rotors and Stators**
- **Spherical & Cylindrical Gas & Liquid Storage Tanks**
- **Heat Recovery Steam Generators**
- **Air Intakes, Exhaust Ducts, Bypass Stacks**
- **Heat Exchangers and Steam Drums** (HP, t= 114 mm, P= 172 bar, P91 alloy)
- **Offshore Structures**
- **Shipbuilding**

**Crude Stabilizer (82 m),
FGP Project,
Kazakhstan, TCO**



**CO₂ Absorber (1,050 mt, 48 m)
Angola LNG, Angola, BECHTEL**



**Slug Catcher Surge Vessel,
Hasdrubal Project, Tunisia,
PETROFAC**



**HP Absorber, AGD II Project,
K.S.A., GASCO**



**Debutaniser, SGP,
Kazakhstan, TCO**



**Claus Reactors, SGP,
Kazakhstan, TCO**



**HRSG, Dow Chemical Plant,
U.S.A., AUSTRIAN ENERGY**

**Makkah Clock Tower, K.S.A.,
SBL GROUP**



**1915 Canakkale Bridge, Turkey,
DLSY**



**Izmit Bay Suspension Bridge,
Turkey, IHI**



**New Stinger Section, The Netherlands,
ALLSEAS**



**FC Shaktar Donetsk Stadium,
Ukraine, ENKA**

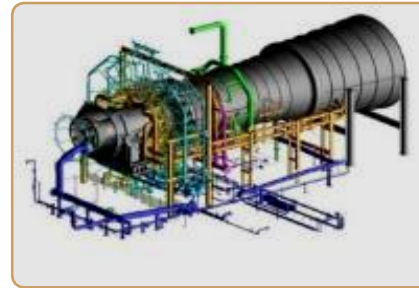
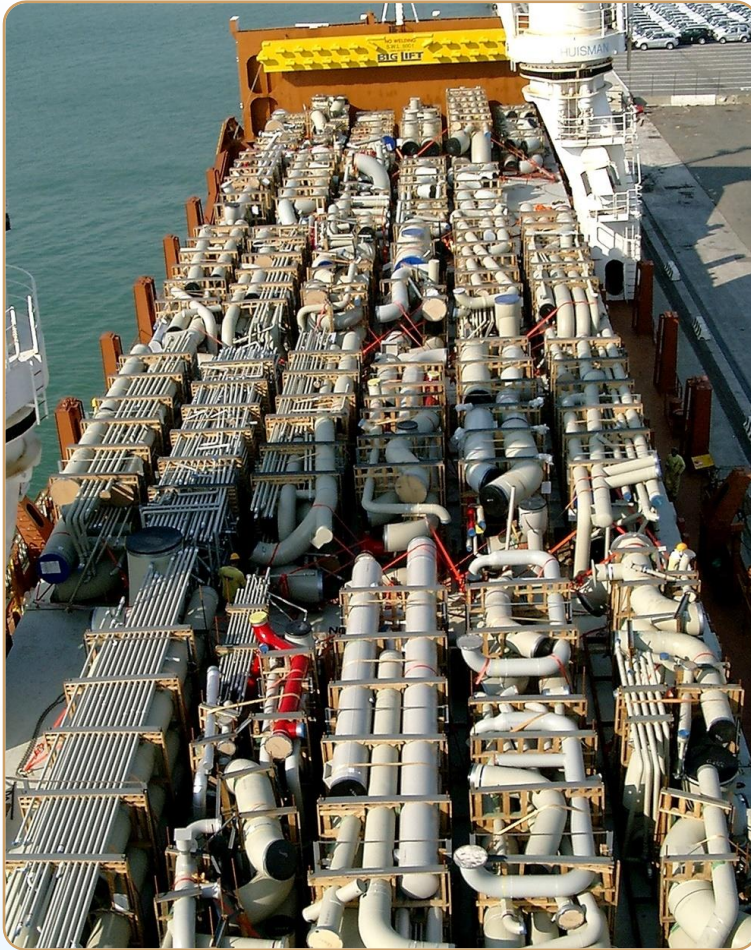


**Wind Towers, Worldwide,
ENERCON, NORDEX, GE WIND**



Wind turbine rotors and Stators,

**Bulk Spool Shipment,
Equatorial Guinea LNG Project,
BECHTEL**



**Turbine Piping of Frames 9E, 9F,
9FA, 6F, 6B, 7FA, 7E, GE Power**



**Sabine Pass & Corpus Christi
LNG Projects, U.S.A., BECHTEL**



**South Helwan Supercritical PP,
Egypt, UEEPC**



**Walsum Coal Fired Power Plant,
Germany, HITACHI EUROPE**



**Onshore Gas Development Stage III,
U.A.E., BECHTEL**



**Motiva Crude Expansion, U.S.A.,
BECHTEL**

MACHINING



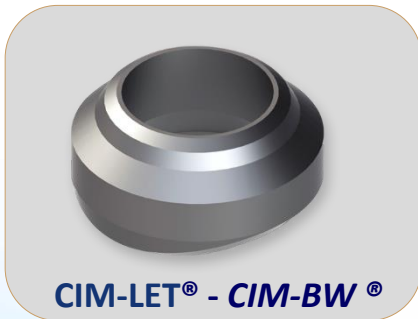
PRODUCTS <small>Designed By CIMTAS</small>	DIAMETER	WALL THICKNESS
CIM-INSERT 45 [®]	2" - 48"	All
CIM-INSERT [®]	1 1/2" - 48"	All
CIM-LET [®]	1/2" - 48"	All

SPECIAL PRODUCTS	DIAMETER	WALL THICKNESS
SWEEPLUS [™]	All	All

- **CIM-INSERT 45[®]**: Fully designed with Finite Element Analysis methodology in accordance with ASME B31.3 & ASME Sec VIII Div II requirements
- **CIM-INSERT[®]** and **CIM LET[®]**: Fully designed according to code requirements
- **CIM-INSERT[®]** : Designed by Bechtel based on the **Acoustic-Induced-Vibration (AIV)** and Manufactured by Cimtas Pipe Fitting Works
- All products machined by 5 axis CNC lathe



CIM-INSERT 45[®]



CIM-LET[®] - CIM-BW[®]



CIM-INSERT 45[®]

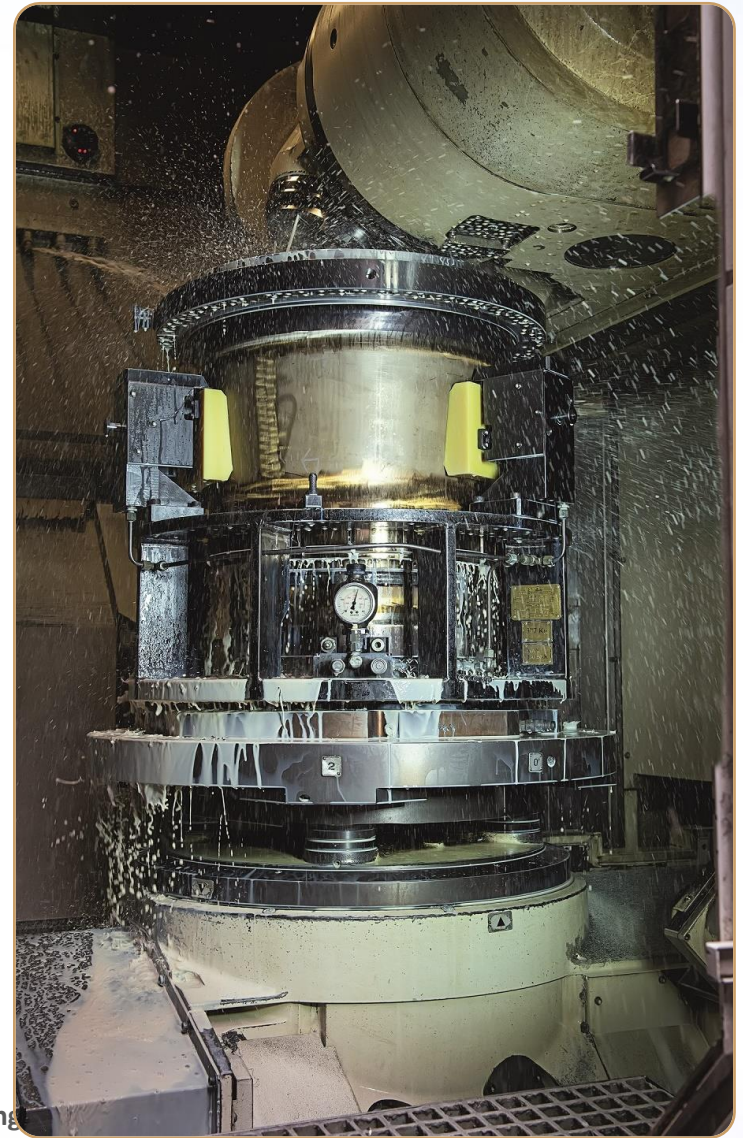
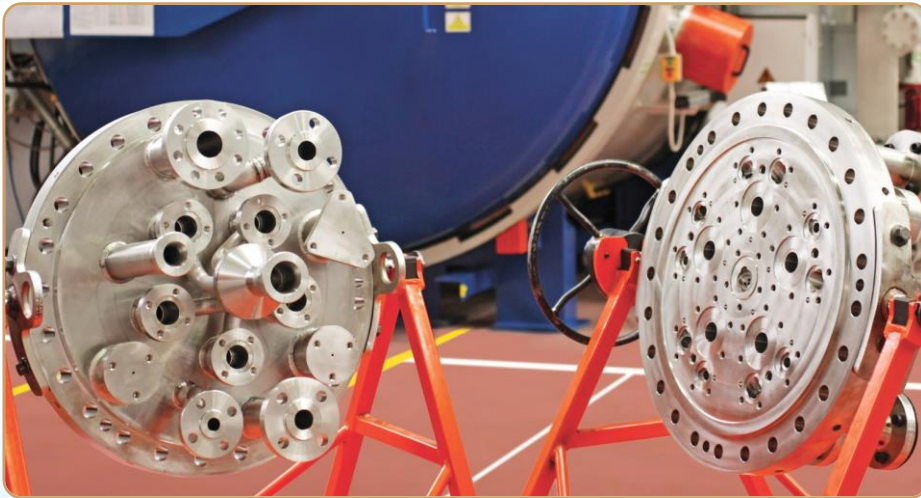


CIM-INSERT[®]

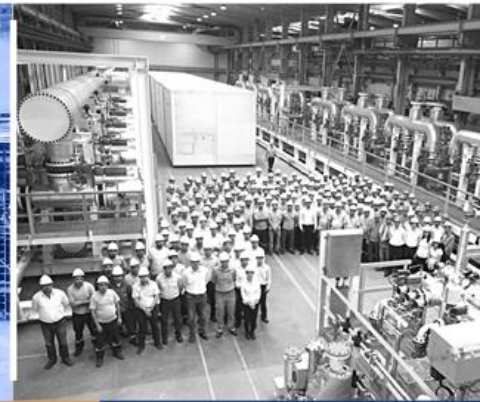


SWEEPLUS[™]

- 16 x 5-axis + 4 multi axis CNC
- Simultaneous 5-Axis Turning & Milling (Up to 49")
- Compliance with Stringent Machining Tolerances ($\pm 0.0002''$)
- CAD / CAM
 - Esprit 2 + C + Y + B Simultaneous
 - Catia V5R20
 - Unigraphics NX 10.0
- Mold, Fixture and Tool Design



MODULARIZATION



BUSINESS LINE

PRODUCTS

- Modules
- Pre-assembled Units (PAUs)
- Pre-assembled Racks (PARs)
- Process Skids
- Turbine Machinery Skids
- Flow Divider & Measuring Units

SCOPE

- Detail Design and Engineering
- Procurement and/or Prefabrication of;
 - Structural Steel and Supports
 - Piping Systems
 - Manual and Automated Valves
 - Electrical and Instrumentation
 - Engineered Equipment
 - Insulation and Heat Tracing
 - Pressure Vessels
- Assembly of;
 - Mechanical Systems
 - E & I Systems
 - Tubing
 - Insulation and Heat Tracing
- Complete Unit Testing;
 - Hydrostatic
 - Functional
 - Electrical
- Trial Assembly
- Packaging and Delivery

MODULARIZATION EXPERIENCE

6 Modules, 613 tons, Petrobrazi Plant
CCR Tower, Romania
UOP



Rominserv Storage Tanks Farm Revamping
Romania, EMERSON-DANIEL



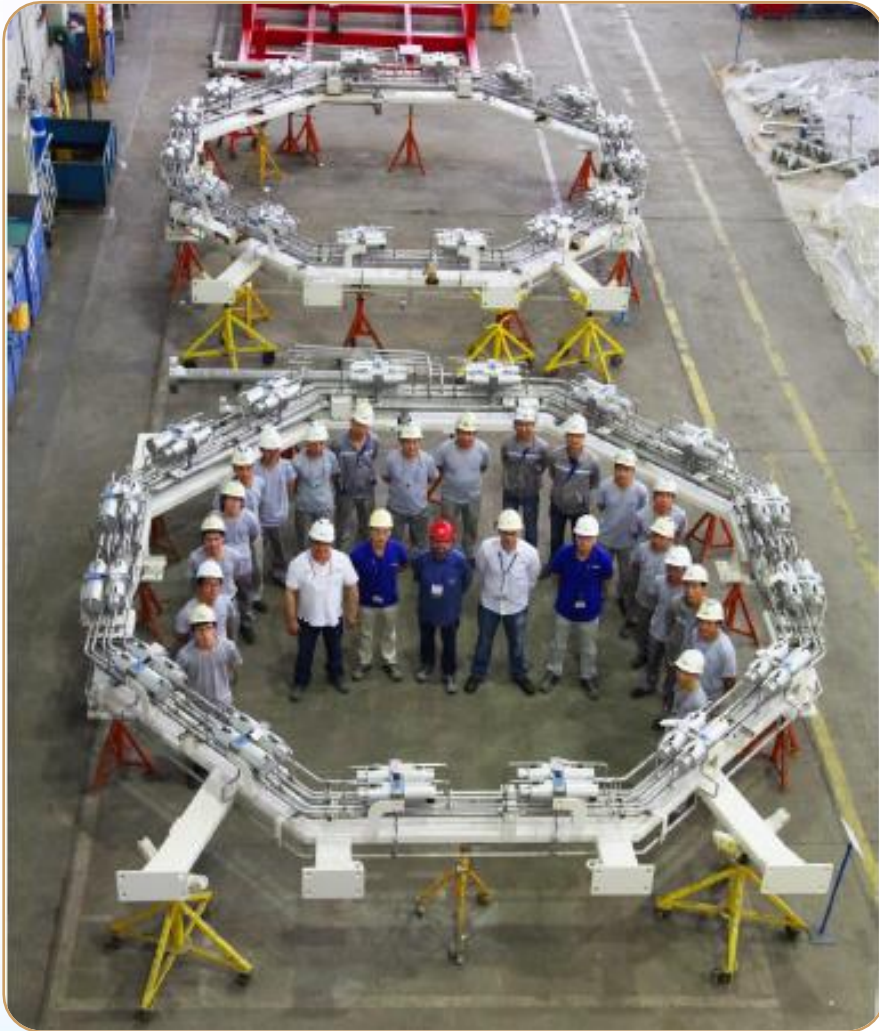
Poly Bed Hydrogen Purification Skids,
UOP



Piping Modularization, EVM II CCPP,
Mexico, GE Power

MODULARIZATION EXPERIENCE

GE EPE 9HA 9016 MODULE



Fuel Gas Skid, GE



Fuel Gas Module, MHPS



Pharmaceutical Skids



Liquid Fuel & Atomizing Air Unit, GE



Fuel Gas Skid, MHPS



Water Injection Module, GE

INSTALLATION



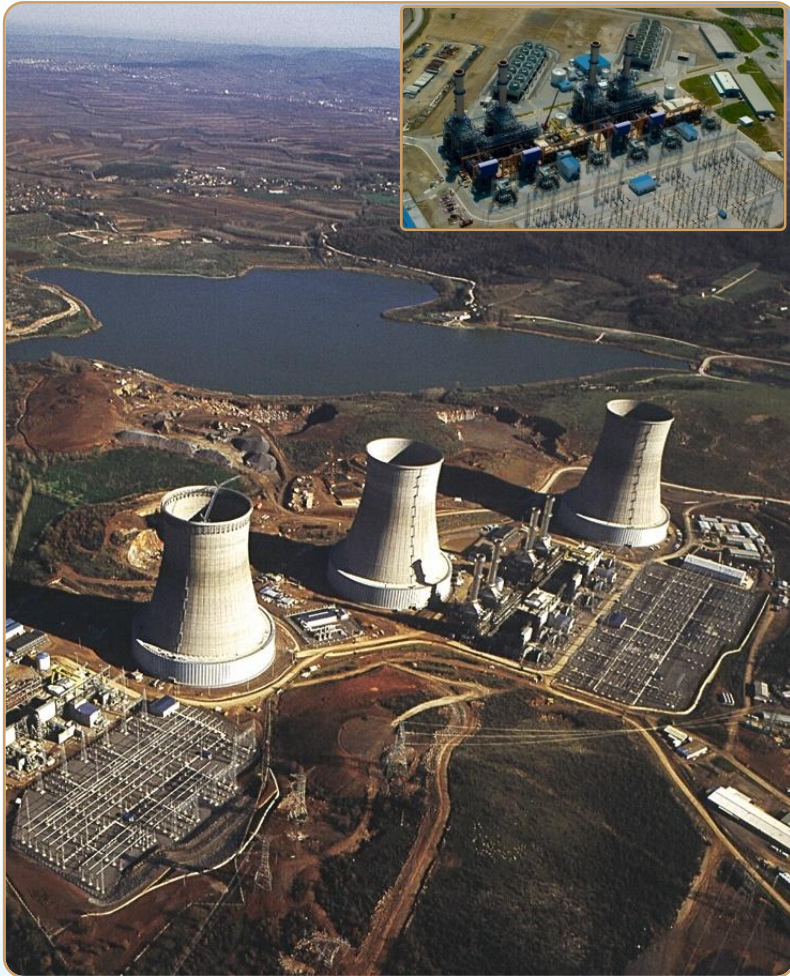
INSTALLATION SCOPE

- Piping incl. Critical and Heavy Wall
- Power Plants
- Petrochemical Plants
- Refineries
- Pump & Compressor Stations
- High Rise Buildings
- Industrial Plants
- Steel Bridges
- Storage Tank Farms
- Ammonia Plants

- ✓ Over 650,000 tons installed in total
- ✓ Structural, Piping, Hook up, Mechanical, Electrical
- ✓ 3 Continents, 15 Countries including the Netherlands and Germany

INSTALLATION EXPERIENCE

**3,854 MW, Turkey BOO
(Gebze-Adapazari-izmir CCPP)
ENKA**



**Tengiz Second Generation Project,
Kazakhstan, TCO**



**111 MW, KPS 6 Powership,
KARADENIZ ENERJI**



**2 x 140,000 m³ EGEGAZ LNG,
Tank Farm, Turkey, EGEGAZ**



**Spherical Storage Tanks,
Marmara Ereğlisi, BUTANGAZ**



**790 MW, Rijnmond Energy Center,
the Netherlands, BECHTEL-ENKA JV**



**411 MW, Yajva CCPP,
the Russian Federation, ENKA**

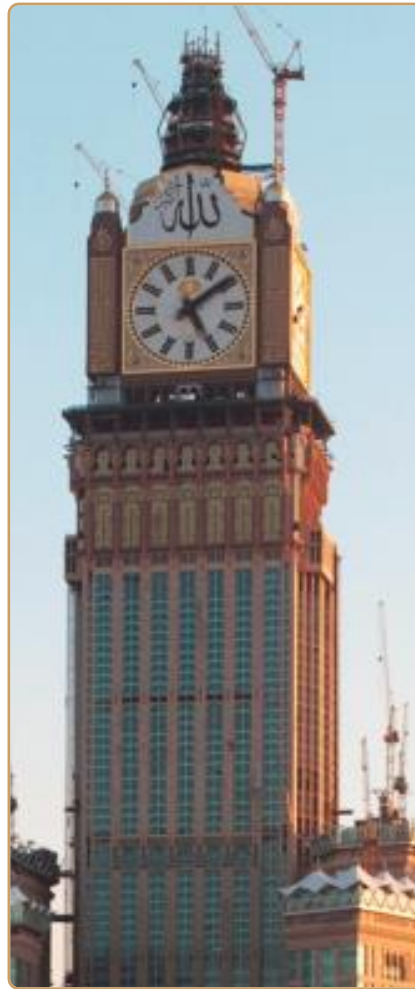
INSTALLATION EXPERIENCE



**Naberezhnaya Tower, 270 m
the Russian Federation,
ENKA**



**Eurasia Tower, 310 m
the Russian Federation,
ENKA**



**Makkah Clock Tower, 601 m
K.S.A.,
SBL GROUP**



**Izmit Bay Crossing Suspension Bridge,
Turkey, IHI**



**FC Shaktar Donetsk Stadium,
Ukraine, ENKA**

INSTALLATION EXPERIENCE

**800 MW Walsum Coal Fired Power Plant,
Germany,
HITACHI POWER EUROPE**



**Walsum Plant P92 Welding,
Germany**



**Walsum Plant P92 Welding,
Germany**



**111 MW, KPS 6 Powership,
Turkey, KARADENIZ ENERGY**



**Petkim Aromatics,
Turkey, PETKIM**



**1,532 MW, Izmir CCPP,
Turkey, ENKA**



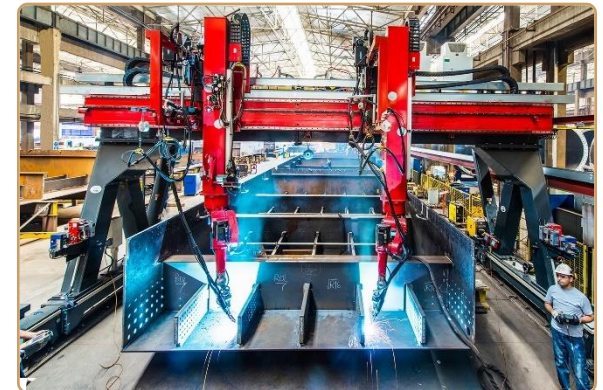
**790 MW, Rijnmond CCPP,
the Netherlands, BECHTEL**

4 INTERNATIONAL DEEP SEA PORTS WITHIN 2 KM



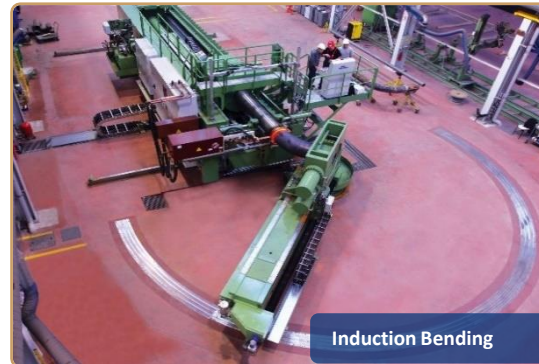
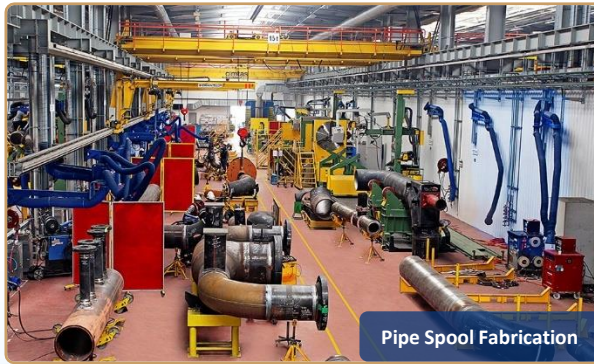
CIMTAS GEMLIK WORKS

- Structural Steel, Pressurized Equipment, Steel Wind Towers, Modularization, Installation, Offshore Structures
- Engineering, Procurement, Automatic and Robotic Welded Fabrication, Machining, Installation
- **Fenced Area:** 160,000 sqm
- **Covered Shop Area:** 60,000 sqm
- **Fabrication Capacity:** 70,000 tons/year
- 22 Bays, 94 Overhead Cranes
- 1 hrs / 100 km from Istanbul



CIMTAS PIPE FABRICATION AND TRADING LTD. CO.

- Operational in 2002 as a **Pipe Spool Shop**
- **Now** An Integrated Spool, Fitting & LSAW Pipe Shop
- Integrated Design & Engineering, Material Procurement, Surface Treatment, Packing, Framing
- Serving OG&C, Power, Construction, Metals & Mining Industries
- **Fenced Area:** 128,800 sqm
- **Covered Shop Area:** 66,500 sqm
- **Total Capacity:** Over 200,000 tons/year
 - **Fabrication Capacity:** 42,000 tons/year
 - **Manufacturing Capacity:**
 - ~150,000 tons/year (Lines Pipes)
 - ~ 60,000 tons/year (Process Pipes)
 - 12,000 tons/year (Fittings)



CIMTAS PRECISION MACHINING INDUSTRIES AND TRADING LTD. CO.

- Manufacturing Complex Performance-Critical Gas Turbine Components for Aviation and Energy Industries
- Manufacturing, Machining, Forming and Special Processes
- EBW, CW, Additive & Laser Welding, Heat Treatment & Brazing, Surface Treatment & Coating, Cutting & Trimming
- **Fenced Area:** 12,000 sqm
- **Covered Shop Area:** 11,400 sqm
- **Manufacturing Capacity:** 430,000 Output Hours
- Laboratory & Measurement Systems
- Nadcap Certificated Special Processes



CIMTAS MODULE AND SHIPYARD

- Floating CC Power Plant Ships, Chemical/Oil Product Tankers, Structural Steel, Modules, Offshore Structures
- **Fenced Area:** 270,000 sqm with 240 m water front
- **Covered Area:** 55,000 sqm (fab, piping, painting shops, offices)
- **Fabrication Capacity:** 50,000 tons/year
- **Slipway 1:** 180 x 56 m with 400 t Gantry and 60,000 dwt capacity
- **Slipway 2:** 106 x 20 m with 100 t Gantry and 10,000 dwt capacity



CIMTAS NINGBO MODULAR SKIDS PIPE SPOOLS

- Incorporated in July 2002, Operational in December 2002
- Fully owned subsidiary of Cimtas
- Fabrication of OEM, Power and Process Piping
- Assembly of Process Skids and Modules
- **Fenced Area:** 55,250 sqm
- **Covered Area:** 31,680 sqm
- **Fabrication Capacity:** 20,000 tons/year
- 4 Spool Fabrication Bays, 1 Skid & Jig Assembly Bay, 1 High Module Assembly Bay,
- 33 Overhead Cranes with Max 60 Tons Lifting Capacity
- Dedicated Blasting, Painting, Passivation and Pickling Areas



CERTIFICATES

	Leadership in Energy & Environmental Design, Gold
	Q1-3475 / 5L-1137 / 2B-0189
	DNVGL-ST-F101
	ISO 9001:2015, ISO/IEC 27001
	ISO/IEC 27001, ISO 9001, OHSAS 18001, ISO 10002, ISO 14001, ISO 50001, ISO 27001, AS 9100
	ISO 50001:2011, ISO 45001:2018, ISO 14001:2015
	EN 12952-5, EN 13480-4, EN 13445-4, AD 2000 HPO, EN 3834-2, EN 3183, 2014/68/EU ANNEX I par. 4.3
	Nondestructive Testing, Surface Enhancement, Heat Treatment, Welding, Thermal Spray
	ASME 'S', 'PP' and 'U' stamps
	National Board 'NB' and 'R'
	ASME 'NPT', 'NS' and 'NA' stamps
	TS (GC1)
	Regulation (EU) No.305/2011 EN 1090-1, EN 1090-2
	Regulation (EU) No.305/2011 EN 10219-1
	2014/68/EU ANNEX III Module H & Module H1
	PED 2014/68/EU Module H
	Certificate of Conformity to Turkish Standards for Unfired Pressure Vessels
	Approved Laboratory to Turkish Standards Institution
	Building Fabricator (BU)
	Sophisticated Painting Endorsement (SPE-P1)
	ABR - Bridge Fabricator (Advanced)
	FCE - Fracture Critical Endorsement
	AWS Certified Welding Fabricator
	TS EN ISO/IEC 17025
	EN ISO 1090 - 2 (EXC 3), EN ISO 3834 - 2
	World Nuclear Association
	CSA B51 (TSSA)
	The Eurasian Customs Union (TR CU) Certificate
	Five Stars

AWARDS



SUPPLIER OF YEAR
GE I (2002)



EXCELLENCE IN DELIVERY
GE I (2003)



EXCELLENCE IN DELIVERY
GE I (2004)



SUPPLIER EXCELLENCE
BECHTEL I (2004)



EFQM BURSA AWARD
KALDER I (2005)



QUALITY SUCCESS AWARD
KALDER I (2007)



OUTSTANDING PERFORMANCE
HITACHI LTD. PSI (2009)



EXCELLENCE IN QUALITY & PERFORMANCE
BECHTEL I (2014)



ENVIRONMENTAL FRIENDLY FACILITY
BURSA MUNICIPALITY I (2014)



STRATEGIC PARTNER
GE I (2015)



EXCELLENCE IN FULFILLMENT
GE I (2015)



EXCELLENCE IN CUSTOMER CENTRICITY
GE I (2016)



"EXPORT CHAMPIONSHIP" AWARD
ISTANBUL MINERAL & METALS EXPORTERS' ASSOCIATION



SPECIAL RECOGNITION PROJECT IZMIT BAY CROSSING SUSPENSION BRIDGE
TEKLA GLOBAL AWARDS I (2016)



BEST PARTNER AWARD
NORDEX I (2016)

"TOP 1,000 EXPORT COMPANIES OF TURKEY" AWARD
ISTANBUL FERROUS & NON-FERROUS EXPORTERS' ASSOCIATION



OVERALL PARTNERSHIP
GE I (2017)



EXCELLENCE IN PERFORMANCE
MHPS-A I (2018)



SUPPLY CHAIN EXCELLENCE
BECHTEL I (2019)



FIVE STARS OCCUPATIONAL HEALTH & SAFETY AWARD
BRITISH SAFETY COUNCIL I (2019)



CERTIFICATE OF APPRECIATION
MITSUBISHI POWER I (2020)

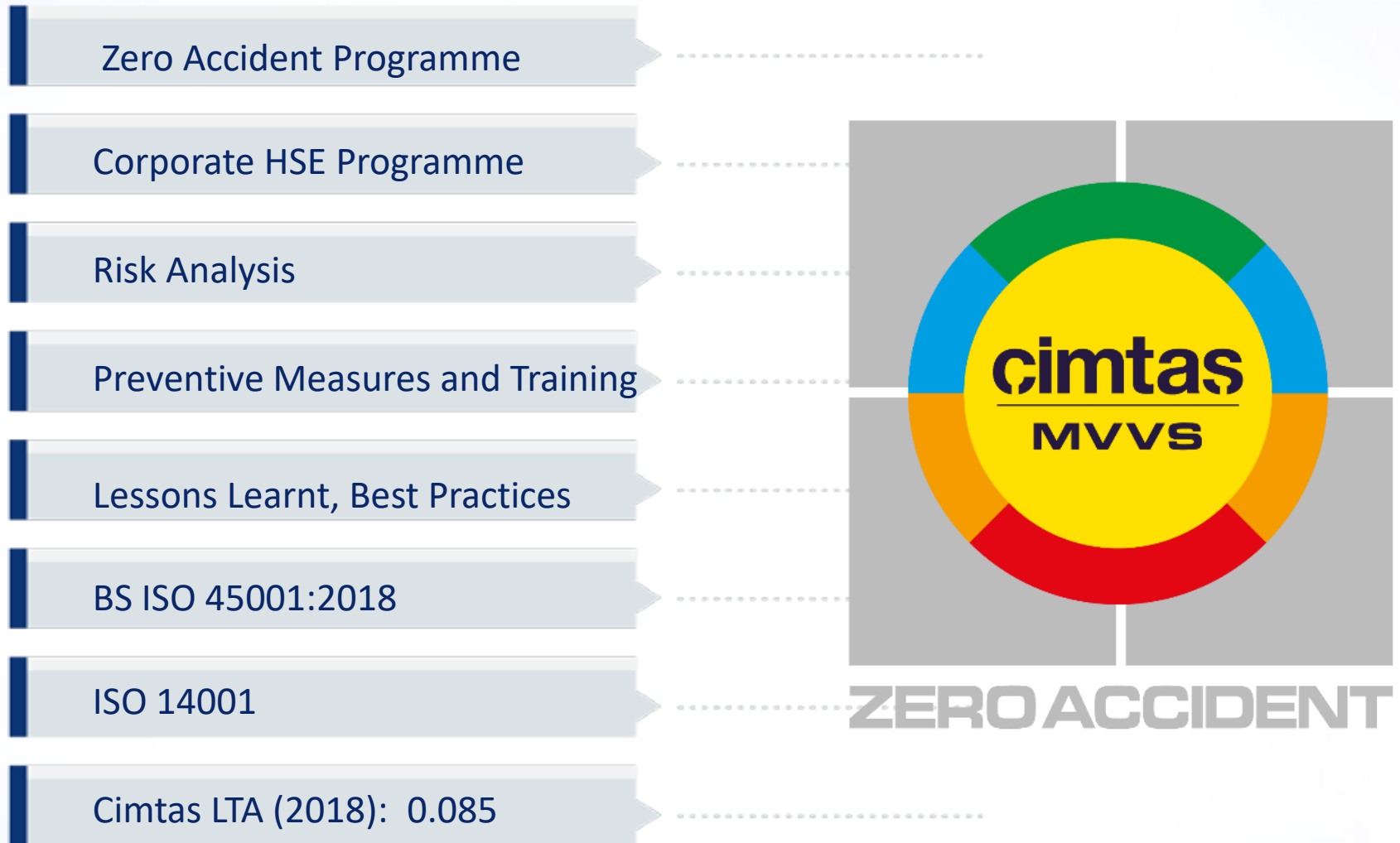


SOCAR STAR REFINERY IFOP PROJECT ZERO ACCIDENT AWARD
SOCAR TURKEY I (2020)

REFERENCES



HEALTH SAFETY ENVIRONMENT



DIFFERENTIATORS



SAFETY

- Zero Accident Programme
- Corporate HSE Programme
- ISO 45001 Regulation
- Risk Analysis
- Lessons Learned
- 5S + 2S Programmes



RELIABILITY

- Preferred Partner
- Proprietary Privilege
- Business Ethics: Code of Conduct
- Consistency
- On Time Delivery
- Least Total Installed Cost



WORLD CLASS QUALITY

- High-tech Machinery
- Multi-Metallurgy Production
- Excellence in Services
- Proven Quality Assurance Systems
- Wide International Experience
- Skilled and Dynamic Personnel



EFFICIENCY

- State-of-the-art facility
- One Way Flow
- Lean Programme
- Kaizen Workshops
- Multiple Award Winner with Proven Flexibility
- Advanced Information Technology

A faint world map is visible in the background of the slide, rendered in a light blue color against the dark blue background.

cimtas
INTEGRATED SOLUTIONS

THANK YOU

www.cimtas.com